

Item # 9880

# *EcoPro*

Professional Disc Repair Machine

## **Operator Manual**



**WARNING! :**

Carefully read and thoroughly understand the important warning items described in this manual before using this product.



**Research Technology  
International Company  
Lincolnwood, Illinois, USA**

Revision # 0810

# EcoPro Operation Manual

R T I

## 1. Contents of EcoPro Carton

**EcoPro Machine**



**Bottle Holder**



**AC Adaptor and Power Cable**



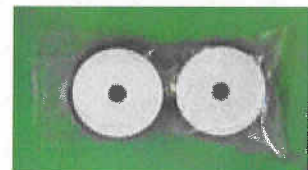
**Water Bottle**



**Compound Bottle**



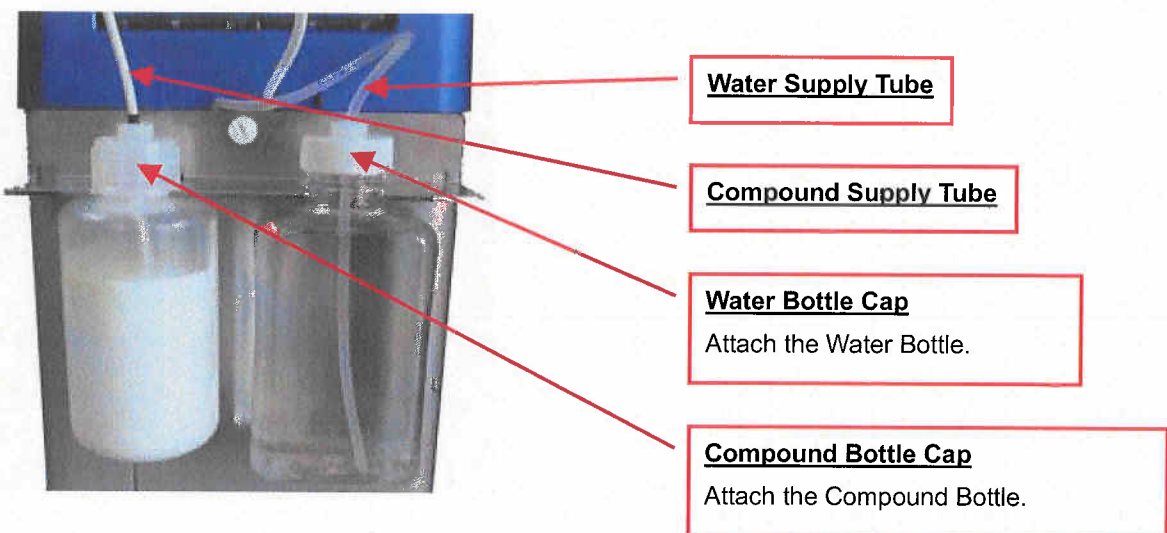
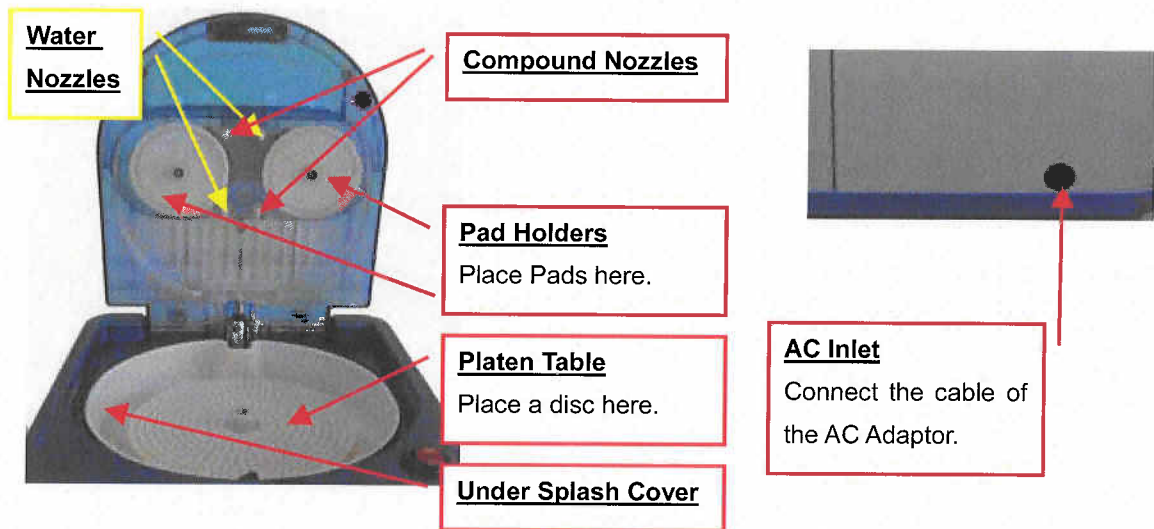
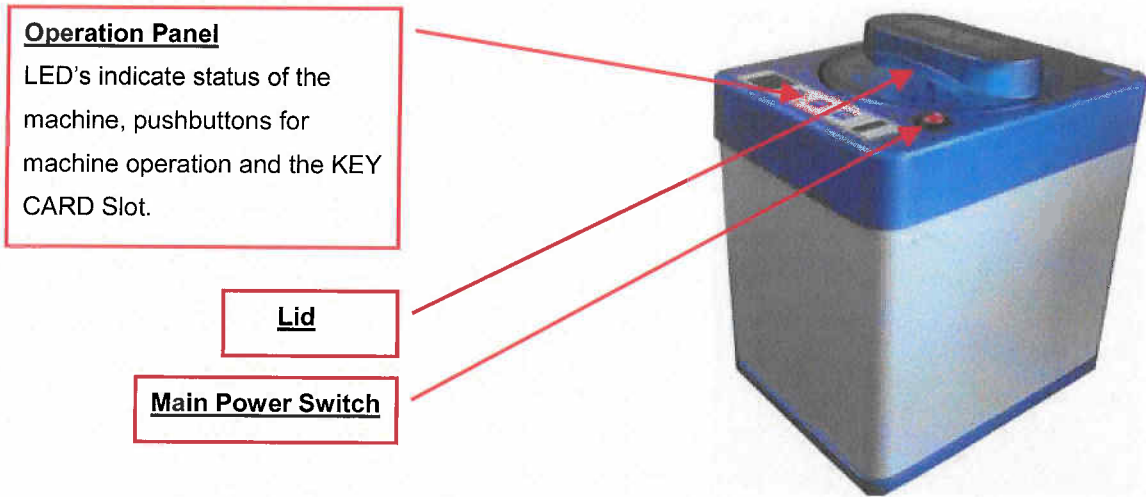
**Pads  
(2 pieces)**



**KEY CARD (1 piece)**



## 2. Description and function of each part



### 3. Before you repair a Disc...

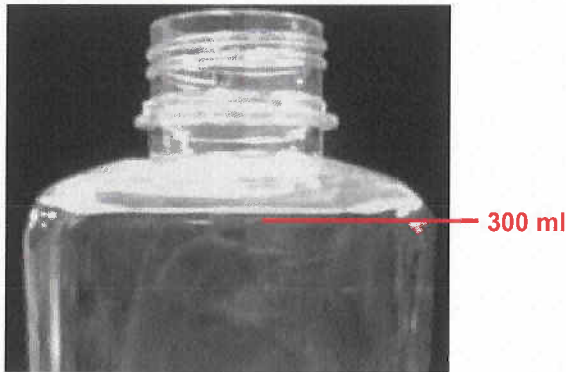
#### 3.1 Attach the Compound Bottle and the Water Bottle

**Caution! Shake the Compound Bottle well before uncapping.**

1. Uncap the Compound Bottle and attach the bottle to the Compound Bottle Cap.



2. Pour 300 ml of water into the Water Bottle.

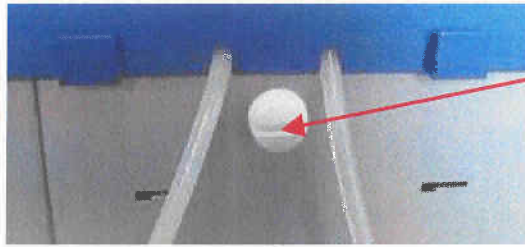


3. Attach the Water Bottle to the Water Bottle Cap.

Confirm that the Water Supply Tube reaches the bottom of the bottle.



4. Loosen and temporarily remove the Bottle Holder Screw at the back of the Unit.



Bottle Holder Screw

5. Hook up the Bottle Holder to the back of the Main Unit.



Looking at the rear of the machine, insert the hooks of the Bottle Holder into the slits in the back and then slide the holder to the left.



6. Secure the Bottle Holder by tightening the Bottle Holder Thumb Screw.



7. Attach the Compound Bottle and the Water Bottle to the Bottle Holder.



### 3.2 KEY CARD Operation

**Caution! Be sure to turn OFF the Main Power Switch before inserting/removing the KEY CARD.**

Be sure to insert the KEY CARD so that the label side faces to the right (when viewing the front of the machine.)



<How to remove the KEY CARD>

Unlock the KEY CARD by pressing the tab toward the front of the machine (in the right photo), and then pull it out.



### 3.3 Power ON

1. Connect the Power Cable to the AC Adaptor.
2. Connect the other cable of the AC Adaptor securely to the AC Inlet at the back of the Main Unit.



3. Connect the power plug to a grounded (3 prong) wall receptacle.

**Caution! Use a correct power receptacle that meets the adaptor's rated electric capacity.**

**Electric capacity: 100 - 240 VAC, 50/60Hz, 120W (Max)**

4. Turn ON the Main Power Switch.
5. The LED displays "--", the Lid opens, if it closed, and then the LED displays "cd" (Compact Disc/DVD mode).



If the LED displays "NC" ("No KEY CARD" message), turn OFF the Main Power Switch, insert the KEY CARD to the KEY CARD Slot properly and then turn ON the Main Power Switch again.



### 3.4 Load consumable materials

Use a small container or even a piece of paper (across the top of the unit) to catch water and compound from the nozzles during the following procedures 1 and 2 below.



1. Before starting to repair discs, fill the tubing and Water Nozzles.

Press and hold "START" button, and then press "FUNC" button. The LED displays "P1", and the Water Pump begins running.



Press any button on the Operation Panel to stop the pump after confirming that water comes out from both Water Nozzles without spurts of air. The display on the LED returns to "cd" or "bd".  
(Note: bd= Blu-ray)

2. Operate the Compound Pump to fill the tubing and Compound Nozzles.

Press the "FUNC" button to enter the **bd** mode. This primes both compound tubes...then,  
Press and hold "STOP" button, and then press "FUNC" button. The LED displays "P2". The Platen Table begins rotating clockwise, which also runs the Compound Pump.



Press any button on the Operation Panel to stop the Platen Table after confirming that compound comes out from both Compound Nozzles. The display on the LED returns to "cd" or "bd".

**Caution!** Preparation of water and compound to feed each nozzle is very important. If not, it may cause damage to the disc and pads.

**Caution!** Be sure to confirm that water and compound come out from each nozzle before using the machine.

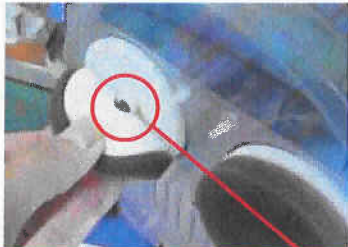
**Caution!** Send the compound back in the Compound Bottle if the machine isn't used for long periods, (over 10 days) because the Compound Supply Tube may become clogged with solidified compound.

Press and hold "**START**" and "**STOP**" button, and then press "**FUNC**" button. The LED displays "**P3**", and the Platen Table begins rotating counterclockwise to run the Compound Pump Backwards. This will force compound back into the bottle.



Press any button on the Operation Panel to stop the Platen Table. The display on the LED returns to "**cd**" or "**bd**". (CD/DVD or Blu-ray)

3. Place each pad to be sure it is centered within each pad holder.



Bend the Pad lightly with fingertips, and fit the center pin of the Pad Holder into the hole of the Pad.

Push the Pad lightly after placing it into the Pad Holder to attach the Velcro. Center the pad on the holder. If the pads have been used before, make sure they are cleaned and dry before reuse.

**Helpful Hint:** Buy another set of pads for quicker changeovers. That way you have a clean set of pads ready to be installed. see "Clean Pads" on page 11.

### 3.5 Placing a disc to be repaired...

Place a disc properly on the white Platen Table.

**Caution!** Place the disc so that "the side to be repaired" faces upwards.





