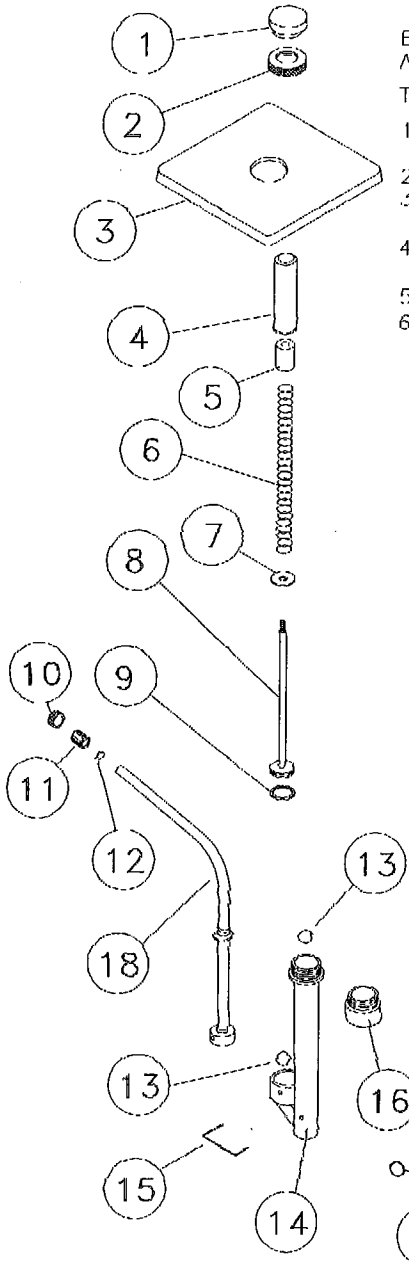


CLEANING INSTRUCTIONS



BEFORE USING AND AT LEAST DAILY, DISASSEMBLE THE PUMP AND WASH ALL PARTS.

TO DISASSEMBLE PUMP:

1. UNSCREW NUT CYLINDER(2). PULL PUMP PLUNGER(8) FROM PUMP CHAMBER (14).
2. UNSCREW KNOB(1) FROM PLUNGER ASSY. AND DISASSEMBLE.
3. UNSCREW CAP TUBE(11) & NUT SLEEVE TUBE(10) FROM DISPENSE TUBE. REMOVE COVER(3) FROM PUMP ASSEMBLY.
4. REMOVE PIN "U"(15) FROM PUMP ASSY. AND DISCONNECT DISPENSE TUBE(18) FROM PUMP CHAMBER(14).
5. REMOVE BALLS(13) FROM PUMP CHAMBER(14).
6. WASH ALL PARTS THOROUGHLY IN HOT SOAPY WATER AND RINSE THOROUGHLY. USE 18" LONG BRUSH(17) TO CLEAN INSIDE OF DISPENSING TUBE(18). REASSEMBLE PUMP. WHEN REASSEMBLING PUMP, WET O RING(9) WITH EDIBLE VEGETABLE OIL, THEN REASSEMBLE. MAKE SURE ALL PARTS ARE IN THEIR PROPER PLACE.

PARTS LIST

ITEM	DESCRIPTION
1.	KNOB RLD, YELLOW OR BLACK*
2.	NUT-CYLINDER
3.	COVER FLAT OR DOME SHAPED
4.	SHIELD-PLUNCER
5.	GUIDE-PLUNGER
6.	SPRING
7.	WASHER
8.	ROD/PLUNGER
9.	O-RING
10.	NUT SLEEVE TUBE
11.	CAP-TUBE*
12.	GASKET*
13.	BALL
14.	PUMP CHAMBER - 5", 8" OR 9"
15.	PIN "U"
16.	EXTENSION
17.	BRUSH
18.	DISPENSE TUBE ASSEMBLY

* INDICATES PART NOT INCLUDED ON ALL MODELS



ALL MODELS
PUMP

STAR MANUFACTURING INTERNATIONAL, INC.

REV. C, 12/6/95

2M-Y8900

DR: MP